



Waste Management Training For Healthcare Staff



Disclaimer

Please note: content in this presentation is accurate for VCH, PHC, FHA and PHSA owned and operated sites; for other sites/health authorities, practice may vary depending on logistics, contracts for service vendors and end disposal vendors, etc.

If you are not part of VCH, PHC, FHA or PHSA, please contact your Hazardous Waste Management person for questions, clarifications, documentation, etc.

Thank you!

Health Care Waste Colour Coding

Health care waste **must** be properly segregated before being sent for disposal or recycling.

Non-Anatomical	Autoclave ➔ Landfill
Sharps	
Anatomical	Incinerate
Cytotoxic	
Pharmaceutical	
Recycling	Recycle
Confidential	
Garbage	Landfill/ Incinerate

Non-Anatomical Waste (autoclave)

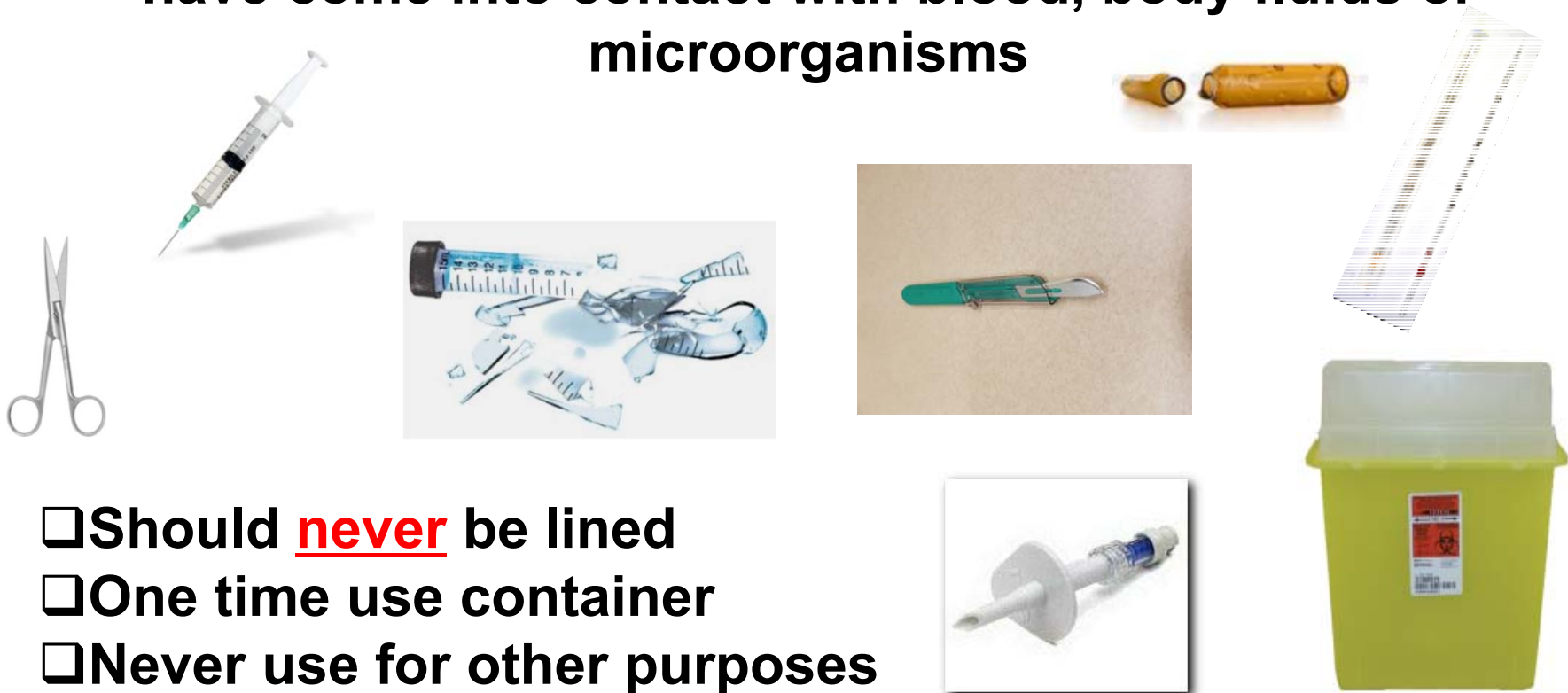
Any items saturated with, dripping with, or containing blood or body fluids containing blood



- Reusable container
- Requires yellow liner

Sharps Waste (autoclave)

Items capable of cutting or puncturing the skin and that have come into contact with blood, body fluids or microorganisms



- Should **never** be lined
- One time use container
- Never use for other purposes

Garbage Items Containing PPI (autoclave)

Garbage items containing Personal Patient Information which can identify a patient

- Remove PPI when possible
- If PPI cannot be removed dispose of item as non-anatomical biomedical waste

 Confidential paper

 Confidential mixed media

 Non-anatomical waste container (yellow liner)
(not sharps container)



Items With Biohazard Symbols (autoclave)

Do Not throw empty, broken, or unused items containing a Biohazard symbol into the garbage or recycling.



Garbage



Recycling



Non-anatomical waste container (yellow liner)

(not sharps container)

Anatomical Waste (incineration)

- ✓ Human and animal tissue
- ✓ Organs
- ✓ Body Parts

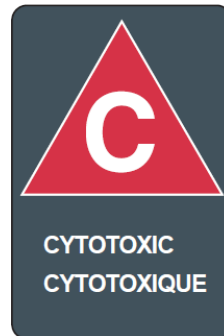


✓ Includes – excess tissue from surgical procedures, and bone.

- Does not require a liner, - best practice is no liner
- Red liner may be used for spill/smell prevention
- One time use container

Cytotoxic Waste (incineration)

Waste that has come into contact with Cytotoxic Agents



Cytotoxic Sharps Containers
(should **never** be lined)

- Does not require liner (may be used for spill/smell prevention)
- If liner used (red only)
- One time use red container - must contain universal Cytotoxic “C”
- Unit staff must seal prior to pick up for disposal

Garbage Waste (landfill/incinerate)

Items that are not “Recyclable” and that are not “Biomedical” waste



- Reusable container
- Requires black/green liner

Glass Only Waste (landfill/incinerate)

Glass only

✓ Empty and intact



✗ Containing blood or pharmaceuticals

✗ Broken

✗ Extremely fragile

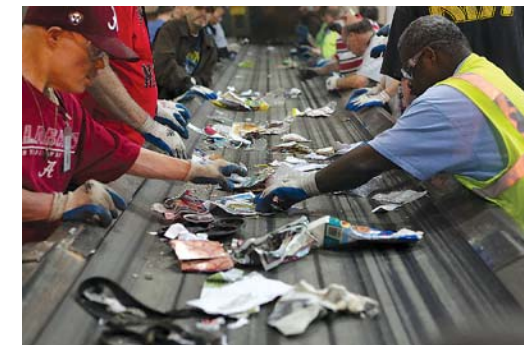
A non-disposable rigid container  or disposable cardboard box 

Double lined with black or dark green liners 

Dispose as garbage waste

Health Care Recycling

- Recycling in health care facilities is **different** from in a home or office.
- Health care facilities generate biomedical waste, so the recyclables pose a higher risk to recycling vendor staff that **sort items by hand**.
- Due to the risks associated with health care recycling, our vendor will not accept any items they **perceive as potentially harmful** to their staff.



Health Care Recycling

- Our vendor **does not accept** the following items for recycling, under any circumstances:
 - × Biomedical Waste and Sharps
 - × Medical Vials
 - × Diapers (Soiled or Unused)
 - × IV Bags
 - × Urinals/Graduated Cylinders
 - × Gloves
 - × Syringes without needles
 - × Items with Biohazard Symbols
 - × Specimen Containers
 - × Glass (apart from Food/Beverage)
 - × Tubing
 - × Plastic Bags
 - × Plastic containers that have held corrosive materials

Biomedical Waste and Sharps 	Medicine Vials 
Diapers 	IV Bags 
Urinals/Graduated Cylinders 	Gloves 
Syringes without needles 	Items with Biohazard Symbols 
Specimen Containers 	Glass (apart from Food/Beverage) 
Tubing 	Plastic Bags/Wraps 
Plastic containers that have held corrosive materials 	

Health Care Recycling

Contamination happens!

- Needles, full blood bags, and suction containers with body fluid have been sent to our recycling vendor in the past



Mixed Container Recycling



Recycling must be collected in blue slim jims or desk side bins.

Clear liners are used to visually check recycling contents.



Mixed Paper Recycling



Recycling must be collected in blue slim jims or desk side bins.

Clear liners are used to visually check recycling contents.



Refundable Beverage Containers Recycling



Recycling must be collected in blue slim jims or desk side bins.

Clear liners are used to visually check recycling contents.



Actions To Reduce Contamination

- ❑ **Always** pair biomedical and recycling containers beside a garbage container when space permits
(Exception: sharps containers)

- ❑ **Never** place biomedical containers of any type directly above or beside recycling containers. If this is not possible
 - ❑ Place a garbage container in between biomedical and recycling containers
 - ❑ Place recycling containers at least a foot away from biomedical containers

- ❑ **Never** place recycling in high contamination risk areas
(i.e., ED Trauma rooms)
This will improve segregation and prevent contamination

